

# Second Suite in F Op.28 No.2

## I. March wind quintet

Clarinet in B $\flat$

Gustav Holst  
arr. Ray Thompson

Allegro  $\text{♩} = 100$

11 **A** *ff* *mf* **4**

18 **B** *f* *p* *p*

24 **C** *mf* **4**

34 **D** *f*

40 *dim.* *p*

47 **E**

54

61 **F**

68

73 *cresc.*

79 **G** *ff*

©RayThompsonMusic

V.S.

Clarinet in B $\flat$

88



96



104



Fine

111

**H**  $\text{♩} = \text{♩}$



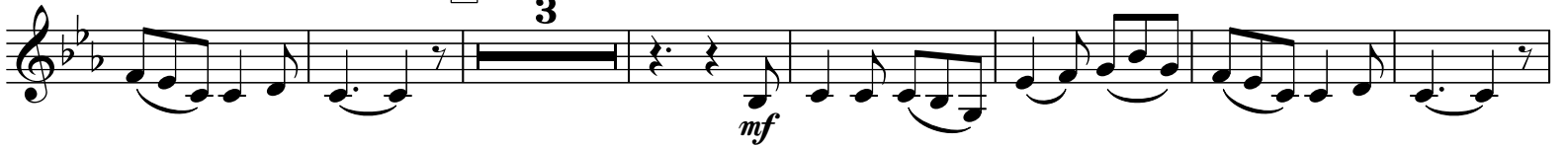
118



126

**I**

3



136

**J**



142



149

**K**



154

D.C. al Fine

